

Project: SE Polk CSD Four Mile Elementary Lighting Replacement Project Number: 25-175 Date: March 26, 2026

Note { *This addendum has been issued to modify and/or interpret the bidding documents, including the drawings and specifications. Unless otherwise instructed, the information contained on the addendum shall take precedence over anything contrary on the original bidding documents and shall be hereinafter considered as a part of the bidding documents.*

## Drawings

### Sheet ED1.1 – Demolition Plan – Area A

1. **REVISE** existing switches to be occupancy sensor wall switches as shown on the attached sheet.
2. **ADD** existing 2x4 troffer to be removed as shown in the kitchen on the attached sheet.
3. **REVISE** orientation of existing 2x4 troffer in nurse’s office as shown on the attached sheet.
4. **REVISE** bolded scope note to include fixture type PC-X under alternate scope.

### Sheet ED1.2 – Demolition Plan – Area B

1. **REVISE** bolded scope note to include fixture type PC-X under alternate scope.

### Sheet ED1.3 – Demolition Plan – Area C

1. **REVISE** bolded scope note to include fixture type PC-X under alternate scope.

### Sheet E1.1 – Lighting Plan – Area A

1. **REVISE** existing switches to be occupancy sensor wall switches as shown on the attached sheet.
2. **REVISE** orientation of new RA 2x4 troffer in nurse’s office as shown on the attached sheet.
3. **REVISE** bolded scope note to include fixture type PC-X under alternate scope.
4. **ADD** general notes J and K as shown on the attached sheet.

### Sheet E1.2 - Lighting Plan – Area B

1. **REVISE** bolded scope note to include fixture type PC-X under alternate scope.
2. **REVISE** lighting layout to (9) type 'RA' fixtures in classroom B151.
3. **REVISE** lighting layout to (9) type 'RA' fixtures in classroom B109.
4. **REVISE** lighting layout to (11) type 'RA' fixtures in classroom B110.
5. **REVISE** lighting layout to (9) type 'RA' fixtures in classroom B115.
6. **REVISE** lighting layout to (9) type 'RA' fixtures in classroom B116.
7. **REVISE** lighting layout to (9) type 'RA' fixtures in classroom B121.
8. **REVISE** lighting layout to (9) type 'RA' fixtures in classroom B126.
9. **REVISE** lighting layout to (9) type 'RA' fixtures in classroom B127.
10. **REVISE** lighting layout to (3) type 'PC-40' fixtures and (1) type 'PC-30' in Media Center B153.
11. **ADD** occupancy/vacancy sensors in Media Center B153.
12. **REVISE** RA 2x4 troffer lighting layouts in Area B corridors as shown on the attached sheet.
13. **ADD** general notes J and K as shown on the attached sheet.

### Sheet E1.3 – Lighting Plan – Area C

1. **REVISE** bolded scope note to include fixture type PC-X under alternate scope.
2. **ADD** general notes J and K as shown on the attached sheet.

Sheet E5.1 – Lighting Details and Schedules

1. Lighting Fixture Schedule
  1. **ADD** approved equals on the lighting fixture schedule.
  2. **ADD** type PC-X as shown on the attached sheet.
  3. **REVISE** type RB to 3500K CCT.
2. **ADD** Lighting Controls Wiring Diagram detail.

**Vendor Approvals**

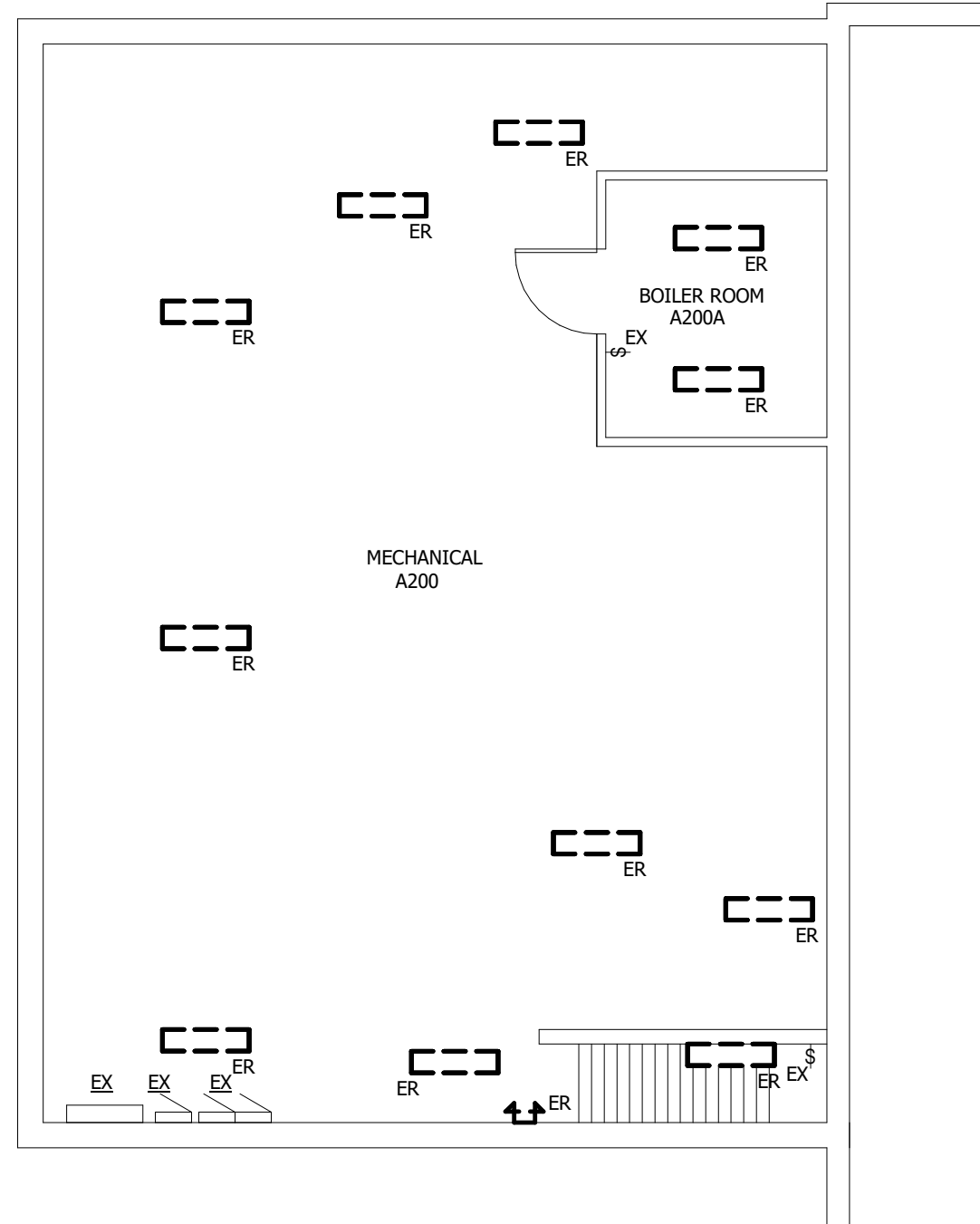
Section 26 5100 – Interior Luminaries

1. Type DA
  1. **ADD** Nora
2. Type EA
  1. **ADD** Exitronix
3. Type EB
  1. **ADD** Exitronix
4. Type EC
  1. **ADD** Exitronix
5. Type ED
  1. **ADD** Exitronix
6. Type PA
  1. **ADD** Trace-Lite
7. Type PB
  1. **ADD** Trace-Lite
8. Type RA
  1. **ADD** Trace-Lite
9. Type RB
  1. **ADD** Startek
  2. **ADD** Day-O-Lite
10. Type WA
  1. **ADD** Trace-Lite
11. Type WB
  1. **ADD** Trace-Lite

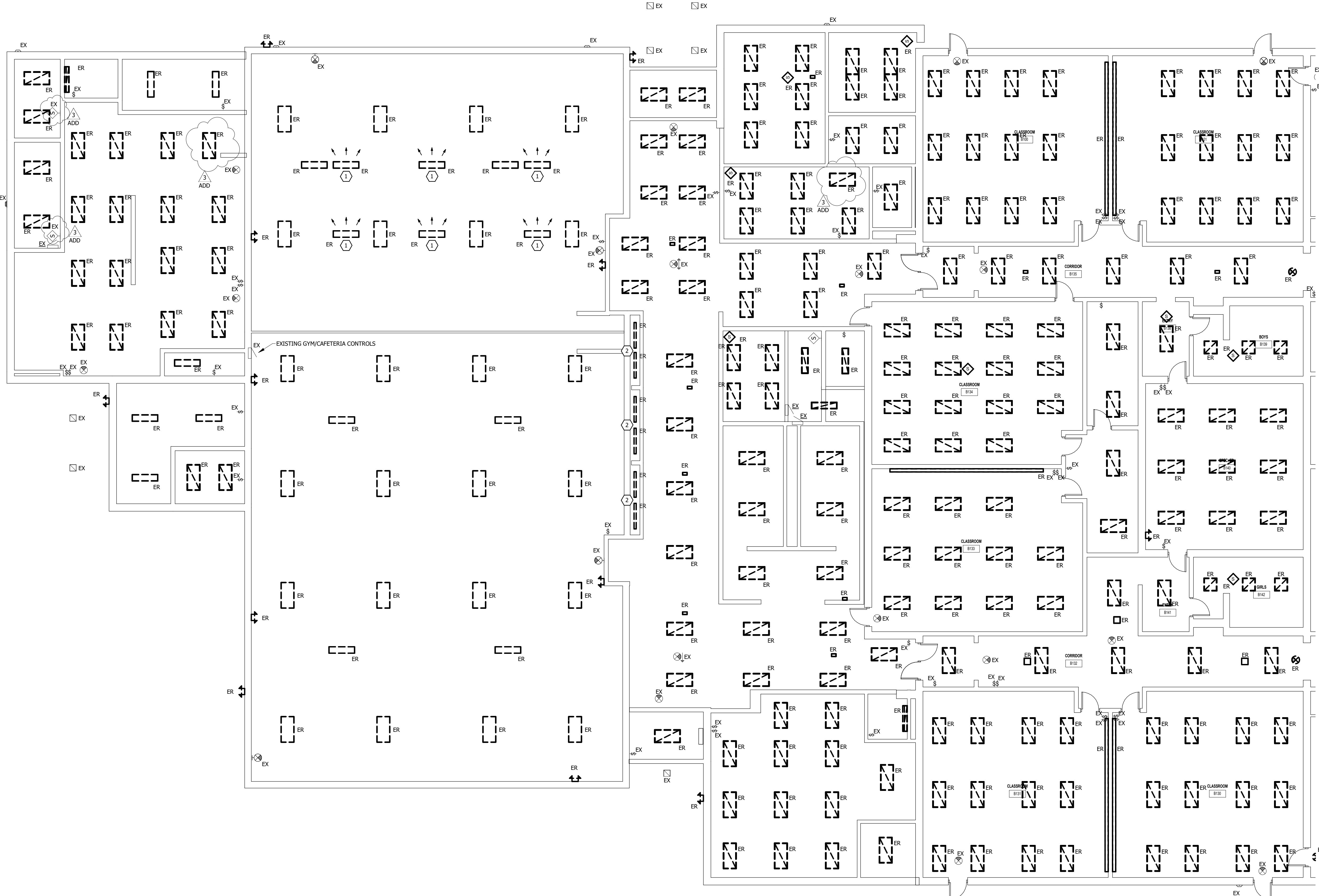
**Attachments**

ED1.1, ED1.2, ED1.3, E1.1, E1.2, E1.3, E5.1

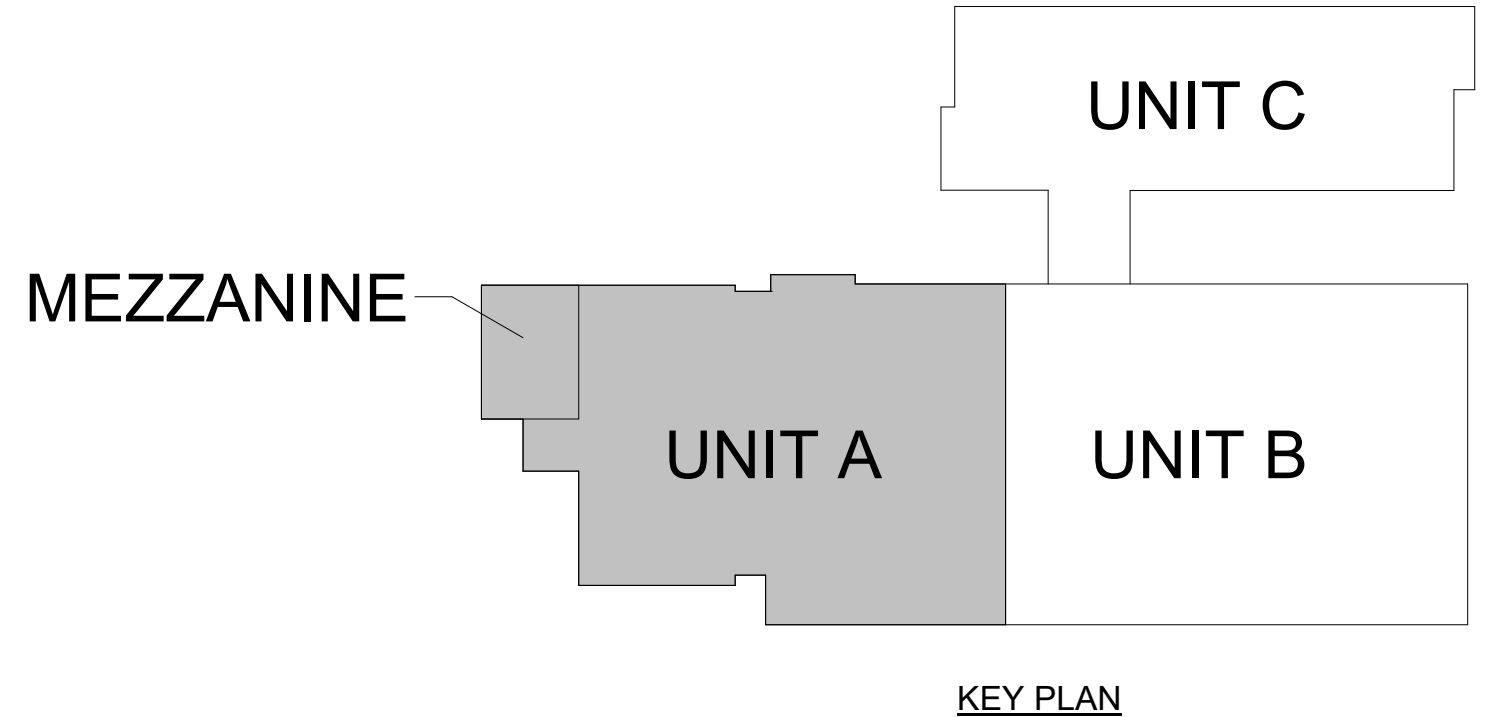
**BASE BID: THE BASE BID CONSISTS OF THE REPLACEMENT OR ADDITION OF ALL EMERGENCY EGRESS LIGHTING ONLY. FIXTURE TYPES TO BE INSTALLED UNDER THE BASE BID ARE TYPES EA, EB, EC, AND ED. ALTERNATE BID: THE ALTERNATE BID CONSISTS OF THE REPLACEMENT OF ALL EXISTING GENERAL LIGHTING, THE REPLACEMENT OF ALL OCCUPANCY/VACANCY SENSOR DEVICES, AND THE ADDITION OF NEW OCCUPANCY/VACANCY SENSOR DEVICES AND ASSOCIATED POWER PACKS. FIXTURE TYPES TO BE INSTALLED UNDER THE ALTERNATE BID ARE TYPES DA, PA, PB, PC-X, RA, RB, WA, AND WB.**



② FOUR MILE LIGHTING DEMO PLAN MEZZANINE  
1/8" = 1'-0"



① FOUR MILE LIGHTING DEMO PLAN - AREA A  
1/8" = 1'-0"

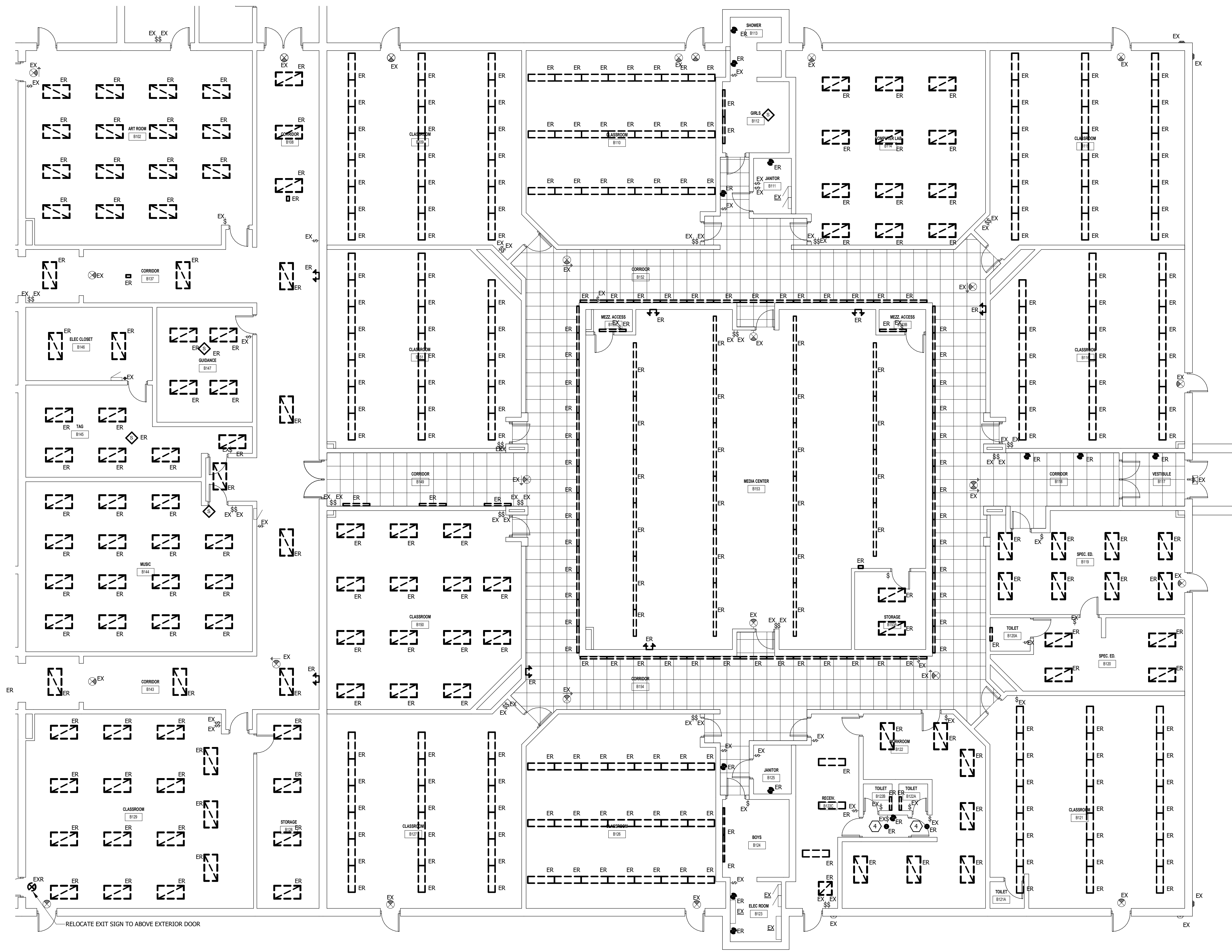


- GENERAL DEMOLITION NOTES:**
- DEMOLITION DRAWINGS ARE BASED ON EXISTING AVAILABLE DRAWINGS AND CASUAL FIELD OBSERVATION. ELECTRICAL CONTRACTORS SHALL FIELD VERIFY THE SITE AND INCLUDE ALL REQUIRED DEMOLITION IN THE BID.
  - ALL REQUIRED DEMOLITION IS NOT INDICATED. IT IS THE INTENT OF THESE DOCUMENTS THAT ALL LIGHTING SYSTEMS (NOT TO BE REUSED OR EXTENDED) BE REMOVED. COORDINATE WITH ARCHITECTURAL DRAWINGS.
  - REFER TO SPECIFICATIONS AND OTHER SHEETS FOR ADDITIONAL DEMOLITION REQUIREMENTS.
  - MAINTAIN FIRE RATINGS OF AFFECTED WALLS AND FLOORS.
  - EXISTING ELECTRICAL SYSTEMS LOCATED IN WALLS AND CHASES NOT BEING REMOVED OR REUSED FOR NEW SYSTEMS MAY BE ABANDONED IN PLACE. CAP AT MAINS OR IN A CONCEALED LOCATION IF REQUIRED.
  - IN AREAS BEING RENOVATED WHERE DEVICES AND/OR FIXTURES ARE BEING DEMOLISHED, CONTRACTOR SHALL PULL BACK WIRING TO NEAREST JUNCTION BOX FOR RECONNECTION OF NEW DEVICES. REFER TO NEW POWER AND NEW LIGHTING PLANS FOR NEW DEVICE LOCATION AND CIRCUIT GROUPING.
  - THE CONTRACTOR SHALL RELOCATE ANY JUNCTION BOXES IN CONFLICT WITH NEW SYSTEMS AND EXTEND CONDUIT AND WIRE AS REQUIRED TO MAINTAIN EXISTING CIRCUITS IN ANY RENOVATED AREAS. PROVIDE A MINIMUM OF (2) JUNCTION BOXES TO BE REWORKED/REPLACED PER ROOM OR LENGTH OF CORRIDOR AS PART OF BID.
  - THE INTENT OF THESE DRAWINGS IS TO DESCRIBE CONTRACTOR'S SCOPE FOR LIGHTING REPLACEMENTS. BASE BID: REMOVE ALL DEDICATED EMERGENCY LIGHTING FIXTURES AND REPLACE WITH NEW EMERGENCY BATTERY LIGHTS. ALTERNATE: REMOVE ALL GENERAL LIGHTING FIXTURES AND REPLACE WITH NEW PERMANENT LED FIXTURES. REPLACE ALL OCCUPANCY/VACANCY SENSOR DEVICES, AND ADD NEW OCCUPANCY/VACANCY SENSOR DEVICES AND ASSOCIATED POWER PACKS. REUSE EXISTING CONDUCTORS AND CONDUIT WHERE POSSIBLE AND IF DEEMED IN GOOD CONDITION. 2'x4' REPLACEMENT FIXTURES SHALL BE INSTALLED IN SAME LOCATION AS REMOVED 2'x4' FIXTURE.

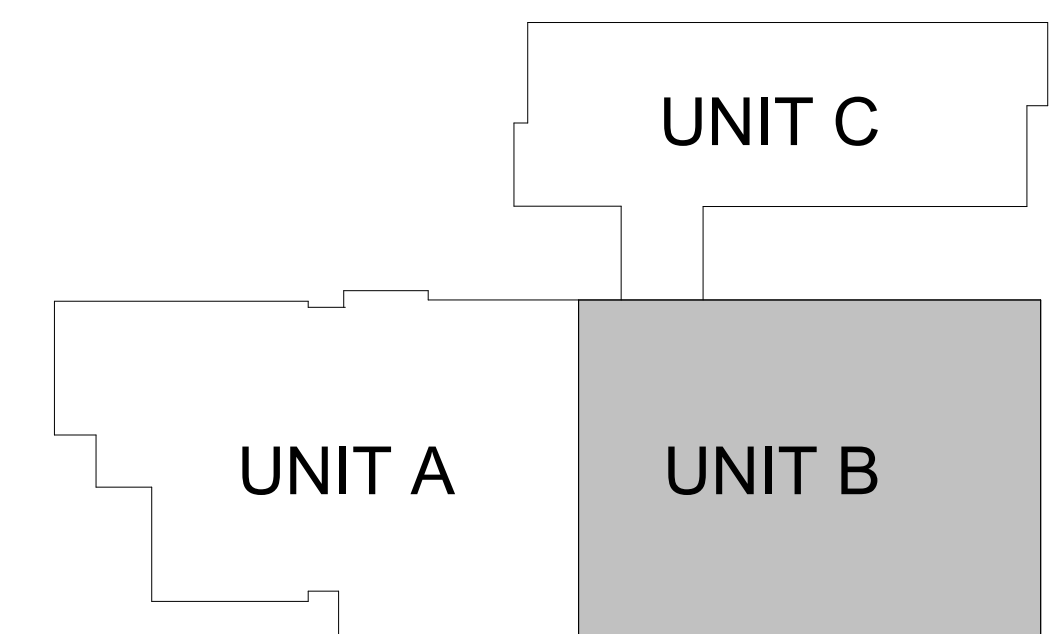
- DEMOLITION REFERENCED NOTES:** (C)
- (NOT ALL NOTES MAY BE APPLICABLE TO THIS SHEET)
- VERIFY WITH OWNER PRIOR TO REMOVAL OF 3-HEAD CAFETERIA FIXTURES.
  - CONFIRM COMPATIBILITY OF NEW LIGHTING WITH DISPLAY CASE LIGHTING CONDITIONS PRIOR TO REMOVAL. NOTIFY ENGINEER OF ANY CONFLICTS.
  - LIGHTING IN THIS AREA SHALL REMAIN EXISTING.
  - CONFIRM FIXTURE APERTURE PRIOR TO REMOVAL AND CROSS WITH NEW LIGHTING. NOTIFY ENGINEER OF ANY APERTURE CONFLICTS PRIOR TO SUBMITTALS.

VERSION	100% CONSTRUCTION DOCUMENTS
DATE	03/23/2024
SHEET NAME:	DEMOLITION PLAN - AREA A
SHEET:	ED1.1

**BASE BID: THE BASE BID CONSISTS OF THE REPLACEMENT OR ADDITION OF ALL EMERGENCY EGRESS LIGHTING ONLY. FIXTURE TYPES TO BE INSTALLED UNDER THE BASE BID ARE TYPES EA, EB, EC, AND ED. ALTERNATE BID: THE ALTERNATE BID CONSISTS OF THE REPLACEMENT OF ALL EXISTING GENERAL LIGHTING, THE REPLACEMENT OF ALL OCCUPANCY/VACANCY SENSOR DEVICES, AND THE ADDITION OF NEW OCCUPANCY/VACANCY SENSOR DEVICES AND ASSOCIATED POWER PACKS. FIXTURE TYPES TO BE INSTALLED UNDER THE ALTERNATE BID ARE TYPES DA, PA, PB, PC-X, RA, RB, WA, AND WB.**



FOUR MILE LIGHTING DEMO PLAN - AREA B  
1/8" = 1'-0"



KEY PLAN

- GENERAL DEMOLITION NOTES:**
- DEMOLITION DRAWINGS ARE BASED ON EXISTING AVAILABLE DRAWINGS AND CASUAL FIELD OBSERVATION. ELECTRICAL CONTRACTORS SHALL FIELD VERIFY THE SITE AND INCLUDE ALL REQUIRED DEMOLITION IN THE BID.
  - ALL REQUIRED DEMOLITION IS NOT INDICATED. IT IS THE INTENT OF THESE DOCUMENTS THAT ALL LIGHTING SYSTEMS (NOT TO BE REUSED OR EXTENDED) BE REMOVED. COORDINATE WITH ARCHITECTURAL DRAWINGS.
  - REFER TO SPECIFICATIONS AND OTHER SHEETS FOR ADDITIONAL DEMOLITION REQUIREMENTS.
  - MAINTAIN FIRE RATINGS OF AFFECTED WALLS AND FLOORS.
  - EXISTING ELECTRICAL SYSTEMS LOCATED IN WALLS AND CHASES NOT BEING REMOVED OR REUSED FOR NEW SYSTEMS MAY BE ABANDONED IN PLACE. CAP AT MAINS OR IN A CONCEALED LOCATION IF REQUIRED.
  - IN AREAS BEING RENOVATED WHERE DEVICES AND/OR FIXTURES ARE BEING DEMOLISHED, CONTRACTOR SHALL PULL BACK WIRING TO NEAREST JUNCTION BOX FOR RECONNECTION OF NEW DEVICES. REFER TO NEW POWER AND NEW LIGHTING PLANS FOR NEW DEVICE LOCATION AND CIRCUIT GROUPING.
  - THE CONTRACTOR SHALL RELOCATE ANY JUNCTION BOXES IN CONFLICT WITH NEW SYSTEMS AND EXTEND CONDUIT AND WIRE AS REQUIRED TO MAINTAIN EXISTING CIRCUITS IN ANY RENOVATED AREAS. PROVIDE A MINIMUM OF (2) JUNCTION BOXES TO BE REWORKED/REPLACED PER ROOM OR LENGTH OF CORRIDOR AS PART OF BID.
  - THE INTENT OF THESE DRAWINGS IS TO DESCRIBE CONTRACTOR'S SCOPE FOR LIGHTING FIXTURE REPLACEMENTS. **BASE BID: REMOVE ALL DEDICATED EMERGENCY LIGHTING FIXTURES AND REPLACE WITH NEW EMERGENCY BATTERY LIGHTS. ALTERNATE: REMOVE ALL GENERAL LIGHTING FIXTURES AND REPLACE WITH NEW PERMANENT LED FIXTURES. REPLACE ALL OCCUPANCY/VACANCY SENSOR DEVICES, AND ADD NEW OCCUPANCY/VACANCY SENSOR DEVICES AND ASSOCIATED POWER PACKS. REUSE EXISTING CONDUCTORS AND CONDUIT WHERE POSSIBLE AND IF DEEMED IN GOOD CONDITION. 2"x4" REPLACEMENT FIXTURES SHALL BE INSTALLED IN SAME LOCATION AS REMOVED 2"x4" FIXTURE.**

- DEMOLITION REFERENCED NOTES:**
- (NOT ALL NOTES MAY BE APPLICABLE TO THIS SHEET)
- VERIFY WITH OWNER PRIOR TO REMOVAL OF 3-HEAD CAFETERIA FIXTURES.
  - CONFIRM COMPATIBILITY OF NEW LIGHTING WITH DISPLAY CASE LIGHTING CONDITIONS PRIOR TO REMOVAL. NOTIFY ENGINEER OF ANY CONFLICTS.
  - LIGHTING IN THIS AREA SHALL REMAIN EXISTING.
  - CONFIRM FIXTURE APERTURE PRIOR TO REMOVAL AND CROSS WITH NEW LIGHTING. NOTIFY ENGINEER OF ANY APERTURE CONFLICTS PRIOR TO SUBMITTALS.

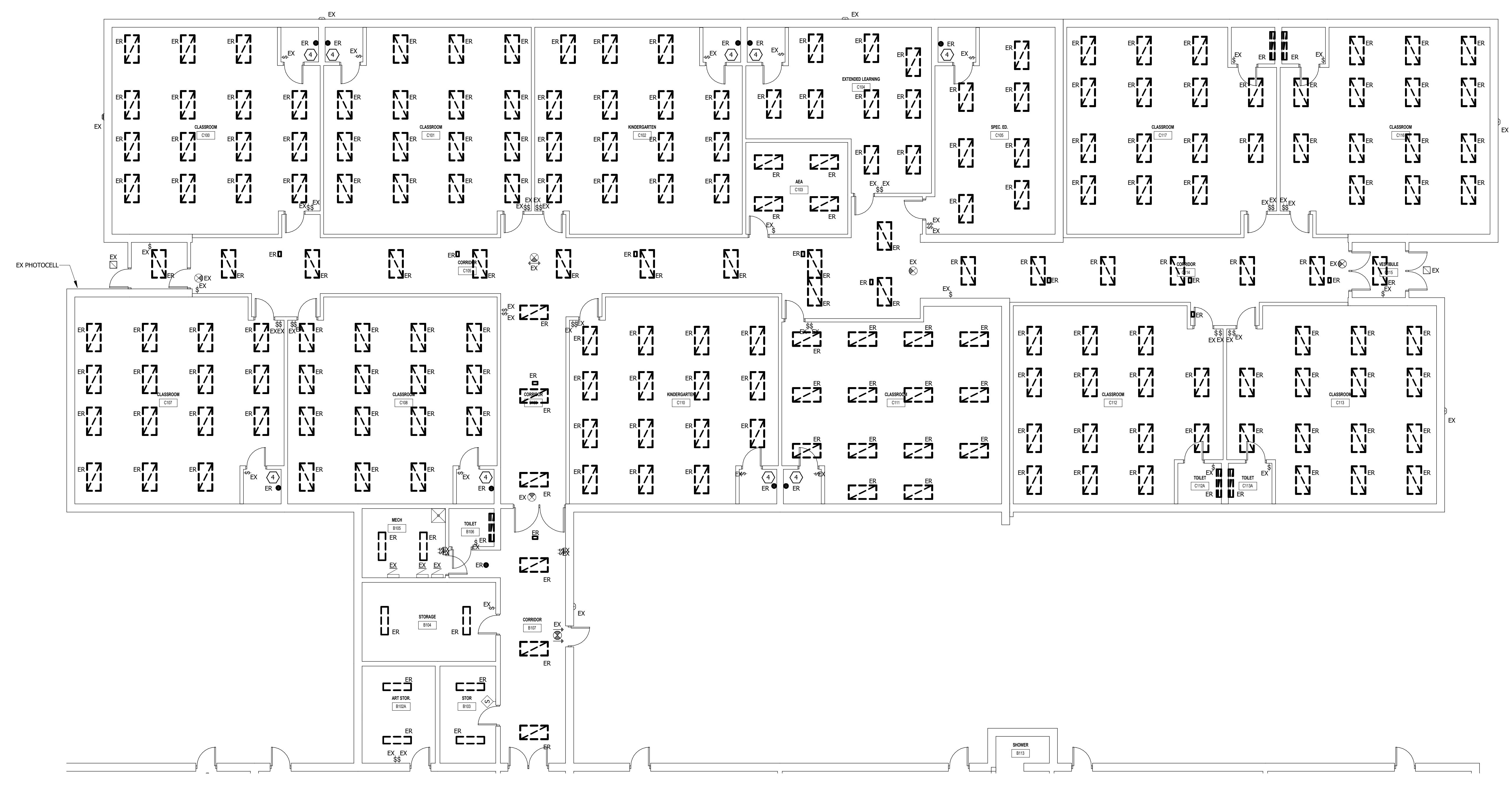
VERSION	100% CONSTRUCTION DOCUMENTS
DATE	03/28/2008
SHEET NAME:	DEMOLITION PLAN - AREA B
SHEET:	ED1.2

**GENERAL DEMOLITION NOTES:**

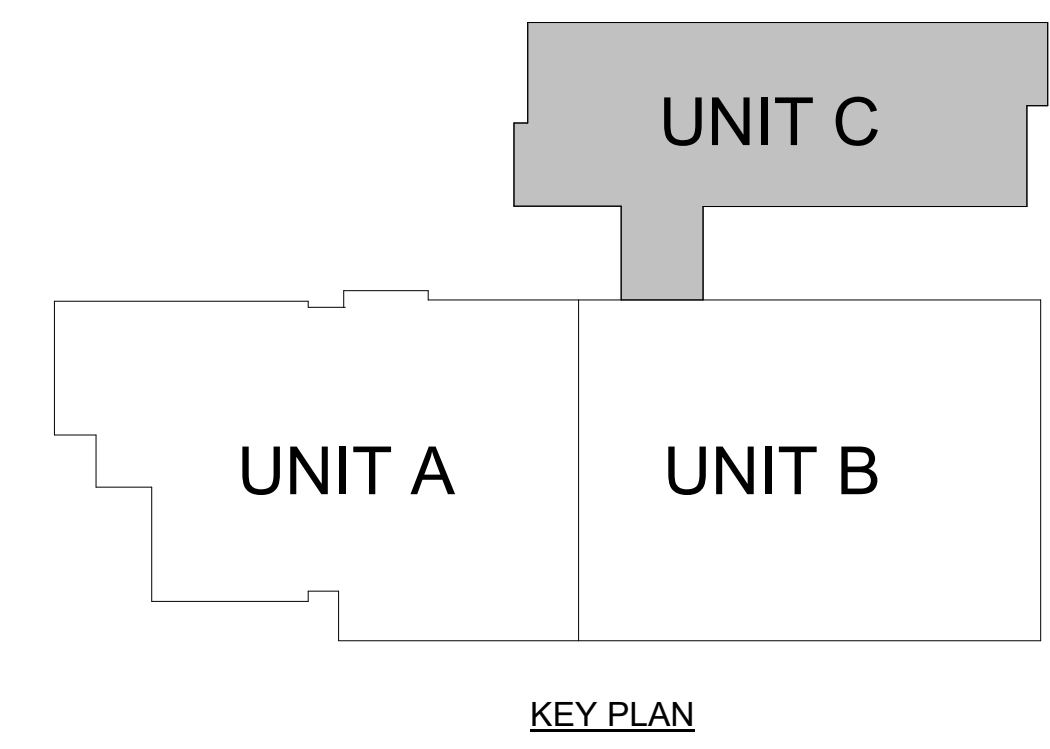
- A. DEMOLITION DRAWINGS ARE BASED ON EXISTING AVAILABLE DRAWINGS AND CASUAL FIELD OBSERVATION. ELECTRICAL CONTRACTORS SHALL FIELD VERIFY THE SITE AND INCLUDE ALL REQUIRED DEMOLITION IN THE BID.
- B. ALL REQUIRED DEMOLITION IS NOT INDICATED. IT IS THE INTENT OF THESE DOCUMENTS THAT ALL LIGHTING SYSTEMS (NOT TO BE REUSED OR EXTENDED) BE REMOVED. COORDINATE WITH ARCHITECTURAL DRAWINGS.
- C. REFER TO SPECIFICATIONS AND OTHER SHEETS FOR ADDITIONAL DEMOLITION REQUIREMENTS.
- D. MAINTAIN FIRE RATINGS OF AFFECTED WALLS AND FLOORS.
- E. EXISTING ELECTRICAL SYSTEMS LOCATED IN WALLS AND CHASES NOT BEING RENOVATED OR REUSED FOR NEW SYSTEMS MAY BE ABANDONED IN PLACE. CAP AT MAINS OR IN A CONCEALED LOCATION IF REQUIRED.
- F. IN AREAS BEING RENOVATED WHERE DEVICES AND/OR FIXTURES ARE BEING DEMOLISHED, CONTRACTOR SHALL PULL BACK WIRING TO NEAREST JUNCTION BOX FOR RECONNECTION OF NEW DEVICES. REFER TO NEW POWER AND NEW LIGHTING PLANS FOR NEW DEVICE LOCATION AND CIRCUIT GROUPING.
- G. THE CONTRACTOR SHALL RELOCATE ANY JUNCTION BOXES IN CONFLICT WITH NEW SYSTEMS AND EXTEND CONDUIT AND WIRE AS REQUIRED TO MAINTAIN EXISTING CIRCUITS IN ANY RENOVATED AREAS. PROVIDE A MINIMUM OF (2) JUNCTION BOXES TO BE REWORKED/REPLACED PER ROOM OR LENGTH OF CORRIDOR AS PART OF BID.
- H. **THE INTENT OF THESE DRAWINGS IS TO DESCRIBE CONTRACTOR'S SCOPE FOR LIGHTING FIXTURE REPLACEMENTS. BASE BID: REMOVE ALL DEDICATED EMERGENCY LIGHTING FIXTURES AND REPLACE WITH NEW EMERGENCY BATTERY LIGHTS. ALTERNATE: REMOVE ALL GENERAL LIGHTING FIXTURES AND REPLACE WITH NEW PERMANENT LED FIXTURES. REPLACE ALL OCCUPANCY/VACANCY SENSOR DEVICES, AND ADD NEW OCCUPANCY/VACANCY SENSOR DEVICES AND ASSOCIATED POWER PACKS. REUSE EXISTING CONDUCTORS AND CONDUIT WHERE POSSIBLE AND IF DEEMED IN GOOD CONDITION. 2"x4" REPLACEMENT FIXTURES SHALL BE INSTALLED IN SAME LOCATION AS REMOVED 2"x4" FIXTURE.**

- DEMOLITION REFERENCED NOTES:** (D)
- (NOT ALL NOTES MAY BE APPLICABLE TO THIS SHEET)
1. VERIFY WITH OWNER PRIOR TO REMOVAL OF 3-HEAD CAFETERIA FIXTURES.
  2. CONFIRM COMPATIBILITY OF NEW LIGHTING WITH DISPLAY CASE LIGHTING CONDITIONS PRIOR TO REMOVAL. NOTIFY ENGINEER OF ANY CONFLICTS.
  3. LIGHTING IN THIS AREA SHALL REMAIN EXISTING.
  4. CONFIRM FIXTURE APERTURE PRIOR TO REMOVAL AND CROSS WITH NEW LIGHTING. NOTIFY ENGINEER OF ANY APERTURE CONFLICTS PRIOR TO SUBMITTALS.

**BASE BID: THE BASE BID CONSISTS OF THE REPLACEMENT OR ADDITION OF ALL EMERGENCY EGRESS LIGHTING ONLY. FIXTURE TYPES TO BE INSTALLED UNDER THE BASE BID ARE TYPES EA, EB, EC, AND ED. ALTERNATE BID: THE ALTERNATE BID CONSISTS OF THE REPLACEMENT OF ALL EXISTING GENERAL LIGHTING, THE REPLACEMENT OF ALL OCCUPANCY/VACANCY SENSOR DEVICES, AND THE ADDITION OF NEW OCCUPANCY/VACANCY SENSOR DEVICES AND ASSOCIATED POWER PACKS. FIXTURE TYPES TO BE INSTALLED UNDER THE ALTERNATE BID ARE TYPES DA, PA, PB, PC-X, RA, RB, WA, AND WB.**




**1 FOUR MILE LIGHTING DEMO PLAN - AREA C**  
 1/8" = 1'-0"



VERSION	100% CONSTRUCTION DOCUMENTS
DATE	03/28/2008
SHEET NAME:	DEMOLITION PLAN - AREA C
SHEET:	ED1.3

VERSION	100% CONSTRUCTION DOCUMENTS
DATE	03.28.2008
SHEET NAME:	LIGHTING PLAN - AREA A
SHEET:	E1.1

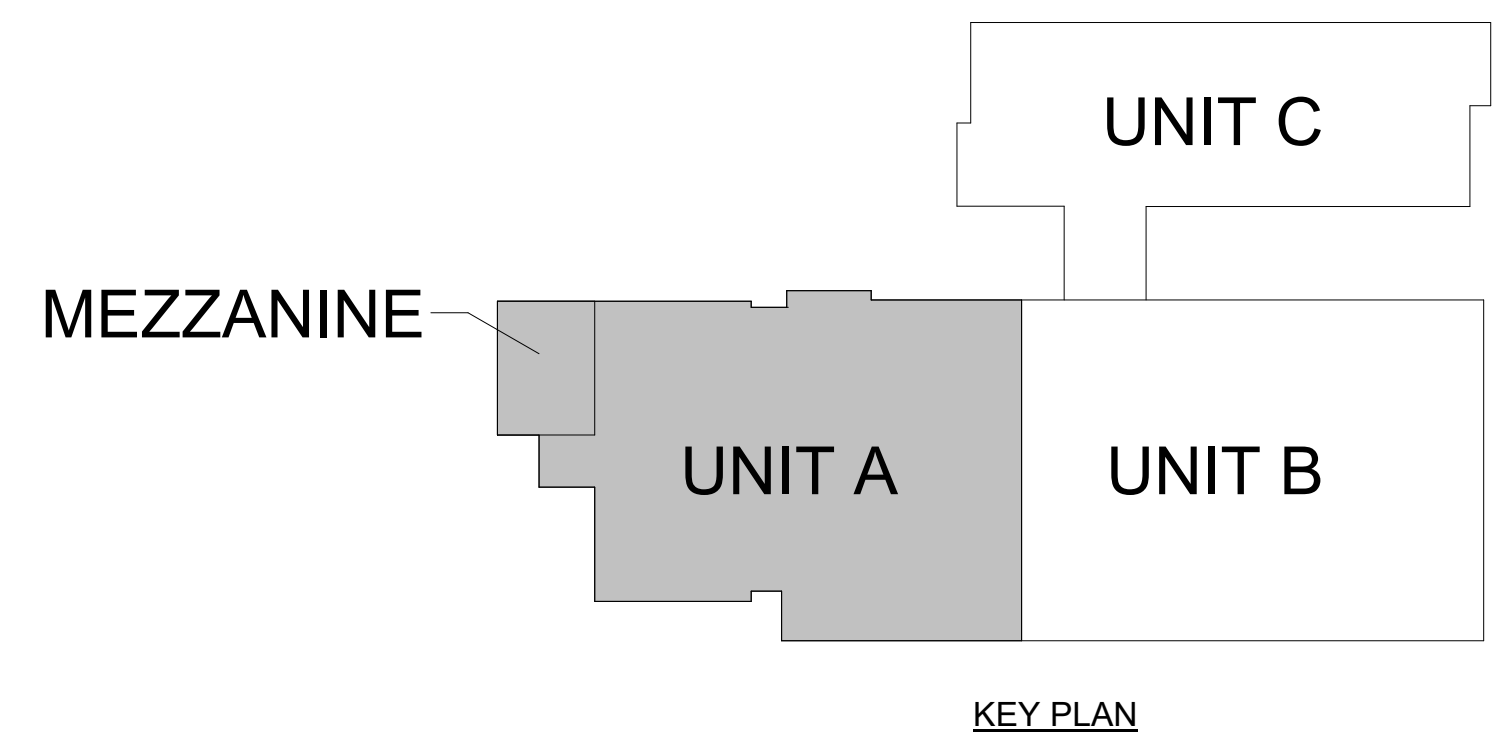
- GENERAL NOTES:**
- SURFACE RACEWAY SHALL NOT BE USED IN ANY FINISHED AREAS WITHOUT PRIOR APPROVAL FROM THE ENGINEER.
  - ALL LIGHTING FIXTURES SHALL BE INSTALLED IN SUCH WAY THAT DRIVERS ARE ACCESSIBLE WITHOUT CUTTING OF CEILING. THE ENGINEER SHALL BE NOTIFIED IMMEDIATELY OF AREAS WHERE THIS IS NOT POSSIBLE.
  - ALL WALL-MOUNTED FIXTURES SHALL HAVE EXACT ROUGH-IN LOCATION DETERMINED BY DESIGN TEAM PRIOR TO ROUGH-IN.
  - THE ELECTRICAL CONTRACTOR SHALL EXTEND AN "UNSWITCHED" HOT CONDUCTOR FROM THE NEAREST NORMAL LIGHTING CIRCUIT TO EVERY EMERGENCY BATTERY LIGHT REQUIRED FOR EMERGENCY EGRESS OPERATION. THE "UNSWITCHED" HOT CONDUCTOR SHALL BE USED FOR SENSING PURPOSES ONLY.
  - UNLESS NOTED OTHERWISE, LIGHTING CONTROLS SHALL REMAIN AND SHALL OPERATE AS EXISTING.
  - REINSTALL ANY REMOVED LIGHTING CONTROLS DEVICES AS NEEDED FOR LIGHTING UPDATES ACROSS THE PROJECT.
  - THE INTENT OF THESE DRAWINGS IS TO DESCRIBE CONTRACTOR'S SCOPE FOR LIGHTING REPLACEMENTS. **BASE BID: REMOVE ALL DEDICATED EMERGENCY LIGHTING FIXTURES AND REPLACE WITH NEW EMERGENCY BATTERY LIGHTS. ALTERNATE: REMOVE ALL GENERAL LIGHTING FIXTURES AND REPLACE WITH NEW PERMANENT LED FIXTURES. REPLACE ALL OCCUPANCY/VACANCY SENSOR DEVICES, AND ADD NEW OCCUPANCY/VACANCY SENSOR DEVICES AND ASSOCIATED POWER PACKS. REUSE EXISTING CONDUCTORS AND CONDUIT WHERE POSSIBLE AND IF DEEMED IN GOOD CONDITION. 2" RPLACEMENT FIXTURES SHALL BE INSTALLED IN SAME LOCATION AS REMOVED 2"x4" FIXTURE.**
  - CONTRACTOR SHALL PROVIDE LUTRON VIVE POWER PACK REPLY MODULE IN CONJUNCTION WITH RADIO POWER SAVING WIRELESS CEILING SENSOR WHERE NEW SENSORS ARE SHOWN ON THE DRAWINGS TO CONTROL LIGHTS IN THE SPACE. IT IS INTENDED THAT CONTROLS OPERATE IN VACANCY DETECTION MODE AND WORK IN CONJUNCTION WITH EXISTING TOGGLE SWITCHES. LIGHTING VENDORS MAY SUBMIT EQUAL PRODUCTS FOR ENGINEER REVIEW. CONTROL SOLUTIONS THAT REQUIRE A WIRELESS TOOL TO PROGRAM WILL NOT BE CONSIDERED.
  - NEW LED FIXTURES WITH SELECTABLE LUMENS AND COLOR TEMPERATURE SHALL BE CONFIGURED AS FOLLOWS:
    - SET SELECTABLE LUMENS TO OWNER'S PREFERENCES.
    - SET SELECTABLE COLOR TEMPERATURE TO 4000K IN GYMNASIUM, CAFETERIA, KITCHEN, AND ELECTRICAL/MECHANICAL ROOMS.
    - SET SELECTABLE COLOR TEMPERATURE TO 3500K IN ALL CLASSROOMS, CORRIDORS, OFFICES, CONFERENCE ROOMS, STORAGE CLOSETS, AND RESTROOMS.
  - ELECTRICAL CONTRACTOR SHALL BE RESPONSIBLE FOR ANY CEILING WORK REQUIRED AS A RESULT OF DEMOLITION OR CHANGES IN LIGHT LAYOUTS. PRESERVE EXISTING CEILING AS MUCH AS POSSIBLE. PROVIDE/CUT T-BARS IN ACT CEILING AS REQUIRED.
  - ELECTRICAL CONTRACTOR SHALL PATCH AND PAINT TO RESTORE ANY DAMAGED WALLS AS A RESULT OF DEMOLITION OF WALL MOUNTED FIXTURES.
- REFERENCED NOTES:**
- (NOT ALL NOTES MAY BE APPLICABLE TO THIS SHEET)
- INSTALL NEW TYPE PB HIGH BAY FIXTURES AT SAME HEIGHT AS EXISTING GYMNASIUM AND CAFETERIA FIXTURES BEING REMOVED.
  - FIELD VERIFY DISPLAY CASE LIGHTING PRIOR TO SUBMITTALS. NOTIFY THE ENGINEER OF ANY CONFLICTS WITH DISPLAY CASE LIGHTING AS SHOWN ON PLANS.
  - FIELD VERIFY REQUIRED MOUNTING/CEILING FIXTURE TYPE, LENGTH, AND FIXTURE APERTURE FOR TYPE RB LINEAR RECESSED LIGHT PRIOR TO SUBMITTALS. NOTIFY THE ENGINEER OF ANY CONFLICTS WITH LIGHTING AS SHOWN ON PLANS.
  - IN AREAS WHERE NEW 2"x4" LIGHTING IS SHOWN REPLACING DIFFERENT STYLES OF FIXTURES, CONTRACTOR SHALL TAKE AN INVENTORY OF PLENUM SPACE AND CONFIRM INSTALL CONSTRAINTS PRIOR TO SUBMITTALS. NOTIFY ENGINEER OF ANY AREAS WHERE NEW 2"x4" LIGHTING WILL NOT BE FEASIBLE AS SHOWN ON PLANS. REPLACE AND/OR RECONFIGURE CEILING TILES AND GRID PORTIONS AS NEEDED.
  - CONFIRM DOWNLIGHT DIAMETER NEEDED PRIOR TO SUBMITTALS. NOTIFY ENGINEER WHERE DOWNLIGHT SIZES SHOWN ON PLANS WILL NOT BE COMPATIBLE WITH CONSTRAINTS FOLLOWING DEMOLITION WORK.

**BASE BID: THE BASE BID CONSISTS OF THE REPLACEMENT OR ADDITION OF ALL EMERGENCY EGRESS LIGHTING ONLY. FIXTURE TYPES TO BE INSTALLED UNDER THE BASE BID ARE TYPES EA, EB, EC, AND ED. ALTERNATE BID: THE ALTERNATE BID CONSISTS OF THE REPLACEMENT OF ALL EXISTING GENERAL LIGHTING, THE REPLACEMENT OF ALL OCCUPANCY/VACANCY SENSOR DEVICES, AND THE ADDITION OF NEW OCCUPANCY/VACANCY SENSOR DEVICES AND ASSOCIATED POWER PACKS. FIXTURE TYPES TO BE INSTALLED UNDER THE ALTERNATE BID ARE TYPES DA, PA, PB, PC-X, RA, RB, WA, AND WB.**



2 FOUR MILE LIGHTING PLAN MEZZANINE  
 1/8" = 1'-0"

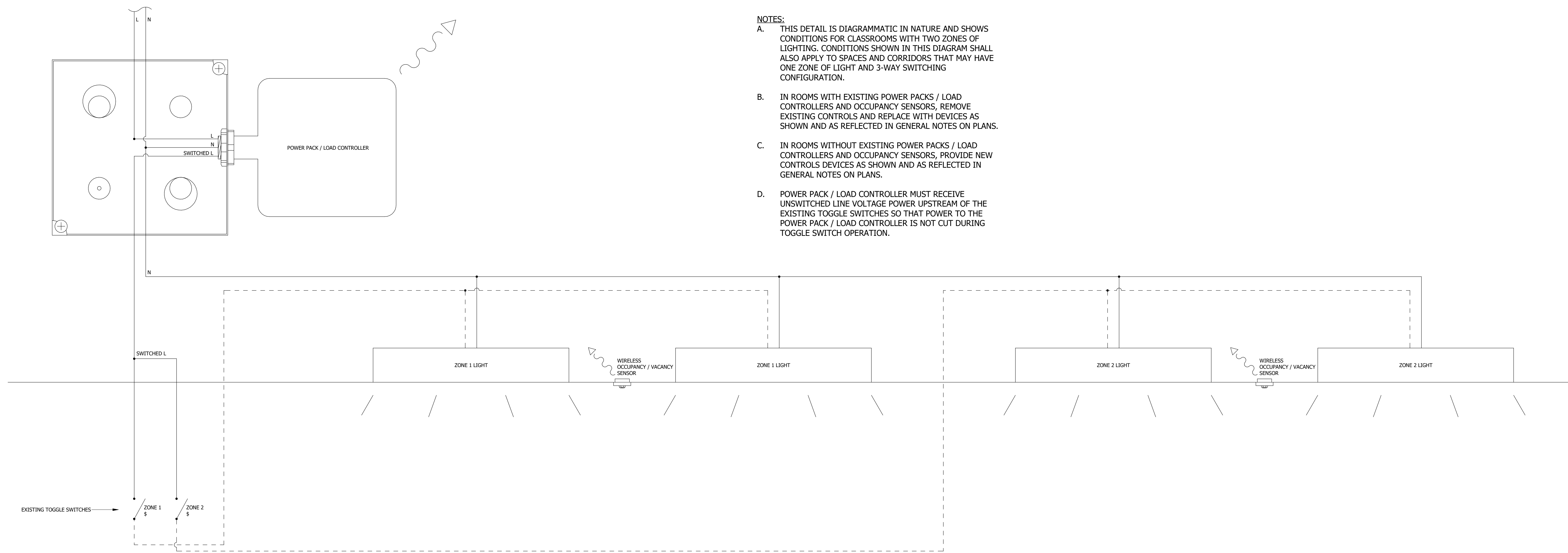
1 FOUR MILE LIGHTING PLAN - AREA A  
 1/8" = 1'-0"



KEY PLAN





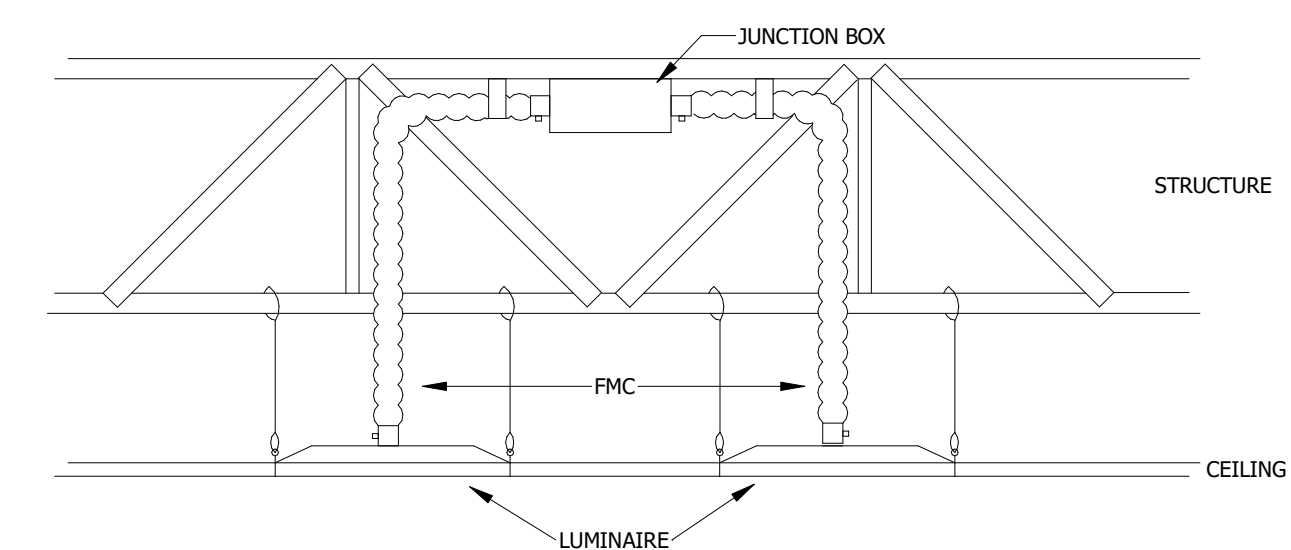


3 LIGHTING CONTROLS WIRING DIAGRAM  
No Scale

- NOTES:**
- A. THIS DETAIL IS DIAGRAMMATIC IN NATURE AND SHOWS CONDITIONS FOR CLASSROOMS WITH TWO ZONES OF LIGHTING. CONDITIONS SHOWN IN THIS DIAGRAM SHALL ALSO APPLY TO SPACES AND CORRIDORS THAT MAY HAVE ONE ZONE OF LIGHT AND 3-WAY SWITCHING CONFIGURATION.
  - B. IN ROOMS WITH EXISTING POWER PACKS / LOAD CONTROLLERS AND OCCUPANCY SENSORS, REMOVE EXISTING CONTROLS AND REPLACE WITH DEVICES AS SHOWN AND AS REFLECTED IN GENERAL NOTES ON PLANS.
  - C. IN ROOMS WITHOUT EXISTING POWER PACKS / LOAD CONTROLLERS AND OCCUPANCY SENSORS, PROVIDE NEW CONTROLS DEVICES AS SHOWN AND AS REFLECTED IN GENERAL NOTES ON PLANS.
  - D. POWER PACK / LOAD CONTROLLER MUST RECEIVE UNSWITCHED LINE VOLTAGE POWER UPSTREAM OF THE EXISTING TOGGLE SWITCHES SO THAT POWER TO THE POWER PACK / LOAD CONTROLLER IS NOT CUT DURING TOGGLE SWITCH OPERATION.

**CONDUCTOR AND CONDUIT SIZING CHART**

	CONDUCTORS (THWN-2)			CONDUIT		PARALLEL RUNS
	PHASE	NEUTRAL	GROUND	EMT	SCH 80	
15/2	(2) #12 AWG	#12 AWG	#12 AWG	1/2"	3/4"	1
20/2	(2) #12 AWG	#12 AWG	#12 AWG	1/2"	3/4"	1



- NOTES:**
- A. MAXIMUM TOTAL LENGTH OF FMC LIMITED TO 6 FEET WITHOUT SEPARATE EQUIPMENT GROUND CONDUCTOR.
  - B. LUMINAIRES SHALL NOT BE DAISI CHAINED TOGETHER WITH FMC.
  - C. REFER TO ARTICLE 250.118(5)D FOR ADDITIONAL DETAILS.

2 TYPICAL LIGHT FIXTURE WIRING DETAIL  
No Scale

**LIGHTING FIXTURE SCHEDULE**

TYPE	BIDD MANUFACTURER	MODEL NUMBER	DESCRIPTION	LAMP/CCT/CRI	CONTROL	DELIVERED LUMENS	WATTS	VOLTS	EQUALS
DA	JUNO	WFB-SWWS-90CRI-MW	8-INCH LED WAFER RETROFIT LIGHT. SELECTABLE CCT. SET SELECTABLE CCT TO 3500K.	LED/SELECTABLE/90	NON-DIM	1,670	19	UNV	ENVISION LED, HALO, ELITE, NORA
EA	LITHONIA	ELM2L-M12	EMERGENCY BATTERY LIGHT. 90-MINUTE RUNTIME.	LED	-	-	-	UNV	COMPASS, SURE-LITES, MULE, EXITRONIX
EB	LITHONIA	ELM4L	EMERGENCY BATTERY LIGHT. 90-MINUTE RUNTIME.	LED	-	-	-	UNV	COMPASS, SURE-LITES, MULE, EXITRONIX
EC	DUAL-LITE	PGZ-HTR	EMERGENCY BATTERY LIGHT. 90-MINUTE RUNTIME. OUTDOOR RATED. COLD WEATHER BATTERY HEATER. DARK BRONZE FINISH.	LED	-	-	-	UNV	EVENLITE, ISOLITE, MULE, EXITRONIX
ED	LITHONIA	LQM-S-W-RG-MVOLT-M6	THERMOPLASTIC LED EXIT SIGN. RED/GREEN LETTER SELECTABLE. BACKUP BATTERY FOR 90-MINUTE RUNTIME. UNIVERSAL MOUNTING. FIELD-SELECTABLE DIRECTIONAL CHEVRONS. WHITE FINISH.	LED/SELECTABLE	-	-	-	UNV	COMPASS, SURE-LITES, MULE, EXITRONIX
PA	LITHONIA	CSS-L48-AL03-MVOLT-SWW3-80CRI-HC36 M12	4-FOOT LED STRIP LIGHT. SELECTABLE LUMENS AND CCT. CHAIN HUNG. SET SELECTABLE LUMENS TO OWNER'S PREFERENCES. SET SELECTABLE CCT TO 4000K.	LED/SELECTABLE/80	NON-DIM	3,432 - 5,585	22 - 37	UNV	COLUMBIA, METALLIX, DAY-BRITE CFI, TRACE-LITE
PB	LITHONIA	CPHB-AL013-MVOLT-SWW9-80CRI-DWH	LED HIGH BAY LIGHT. SELECTABLE LUMENS AND CCT. SET SELECTABLE LUMENS TO OWNER'S PREFERENCES. SET SELECTABLE CCT TO 4000K.	LED/SELECTABLE/80	NON-DIM	12,000 - 18,000	83 - 125	UNV	ILP, METALLIX, DAY-BRITE CFI, TRACE-LITE
PC-X	LUX ILLUMINAIRE	EO64.0-P-DI-LAM-500-BAT-375-24-35K-8-1-UNV-S1-W-X-42-WF	LED LINEAR PENDANT MOUNTED LIGHT. DIRECT LAMBERTIAN DISTRIBUTION. FLUSH LENS STYLE. INDIRECT BATWING DISTRIBUTION.	LED/3500K/80	NON-DIM	UP: 375 LM/FT DN: 500 LM/FT	7.25	UNV	AXIS, STARTEK, LEDALITE, DAY-O-LITE
RA	LITHONIA	CPX-2X4-AL08-SWW7-M2	2x4 LED FLAT PANEL. SELECTABLE LUMENS AND CCT. SET SELECTABLE LUMENS TO OWNER'S PREFERENCES. SET SELECTABLE CCT TO 3500K.	LED/SELECTABLE/80	NON-DIM	2,399 - 4,564	18.5 - 37.5	UNV	COLUMBIA, METALLIX, DAY-BRITE CFI, TRACE-LITE
RB	LUX ILLUMINAIRE	EOS X-0-R-X-LAM-375-X-35K-8-UNV-S1-W	LED LINEAR RECESSED LIGHT. SYSTEM RUN. FIELD-VERIFY REQUIRED APERTURE AND REQUIRED LENGTH PRIOR TO SUBMITTALS. WHITE FINISH.	LED/3500K/80	NON-DIM	375 / FT	3.4 / FT	UNV	AXIS, STARTEK, LEDALITE, DAY-O-LITE
WA	LITHONIA	CSS-L48-AL03-MVOLT-SWW3-80CRI	4-FOOT LED STRIP LIGHT. SELECTABLE LUMENS AND CCT. WALL MOUNTED. SET SELECTABLE LUMENS TO OWNER'S PREFERENCES. SET SELECTABLE CCT TO 3500K.	LED/SELECTABLE/80	NON-DIM	3,432 - 5,585	22 - 37	UNV	COLUMBIA, METALLIX, DAY-BRITE CFI, TRACE-LITE
WB	LITHONIA	CSS-L24-AL015-MVOLT-SWW3-80CRI	2-FOOT LED STRIP LIGHT. SELECTABLE LUMENS AND CCT. WALL MOUNTED. SET SELECTABLE LUMENS TO OWNER'S PREFERENCES. SET SELECTABLE CCT TO 3500K.	LED/SELECTABLE/80	NON-DIM	1,610 - 2,648	13 - 19	UNV	COLUMBIA, METALLIX, DAY-BRITE CFI, TRACE-LITE

1. PROVIDE ALL PARTS AND PIECES FOR A COMPLETE AND FULLY FUNCTIONAL LIGHTING SYSTEM.
2. CONTRACTOR SHALL INSTALL ALL FIXTURES PER MANUFACTURER RECOMMENDATIONS IN LOCATIONS SHOWN ON DRAWING AND NOTIFY DESIGN TEAM IF THIS IS NOT POSSIBLE PRIOR TO ROUGH-IN.
3. VERIFY ALL WALL MOUNTED FIXTURE LOCATIONS WITH THE LIGHTING DESIGNER PRIOR TO ROUGH-IN.
4. COORDINATE ALL DRIVERS WITH CONTROLS TO ENSURE FULL COMPATIBILITY.
5. VERIFY ALL FINAL CEILING TYPES AND MOUNTING CONFIGURATIONS PRIOR TO RELEASE OF FIXTURES.

LIGHT FIXTURE SCHEDULE BY: ADAM VANDER HELM, LC